

Automotive Tablet Oscilloscope

ATO Series



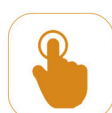
Auto Diagnostics



IOS



Android



Touch Screen



PC software



Video Record



HDMI



Wi-Fi

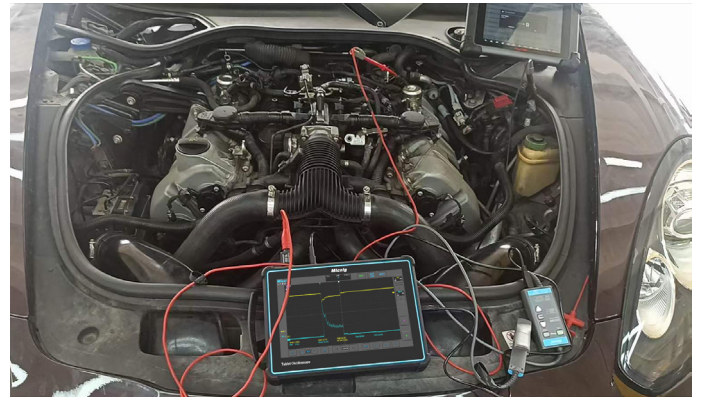


USB

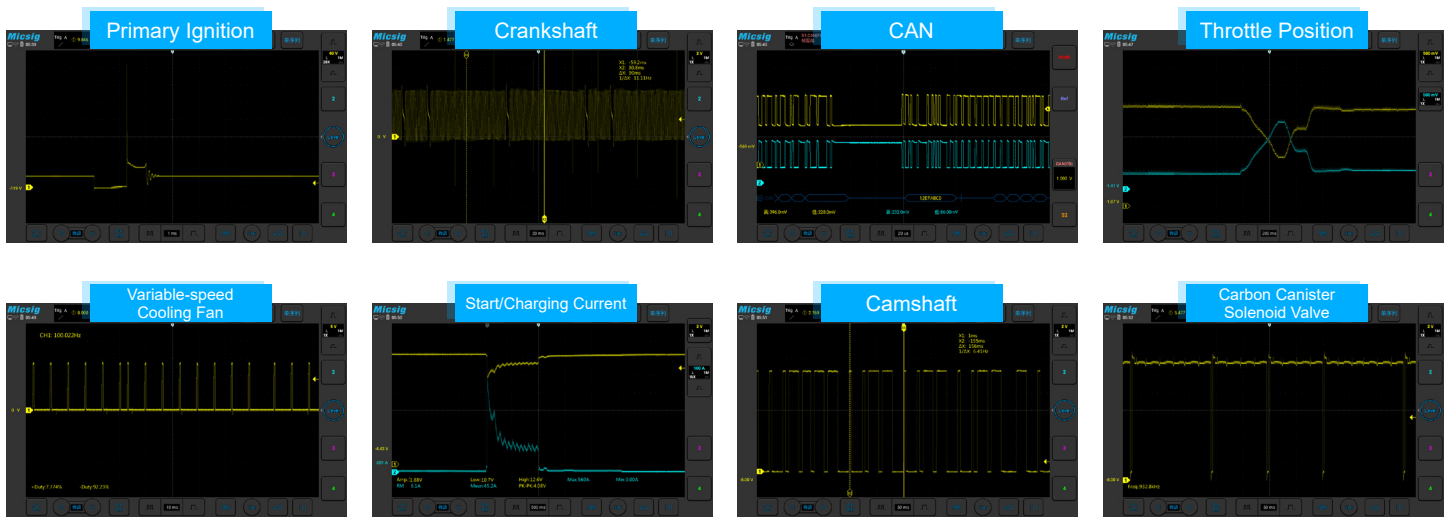
Model	ATO1004	ATO2004	ATO3004
Bandwidth	100MHz	200MHz	300MHz
Analog Channels	4		
Sampling Rate (Max.)	1GSa/s	2GSa/s	
Memory Depth	110Mpts	220Mpts	
Waveform Capture Rate (Max.)	78,000 wfms/s	300,000 wfms/s	
Support Tests	High Pass / Low Pass (to 30kHz)	High Pass / Low Pass (to 30Hz)	
Segmented storage	N/A	Support to capture max 10,000 events	
Support Tests	Charging/Start Circuits, Sensors, Actuators, Ignition, Networks (CAN L/H, CAN FD, LIN, Flexray, K line), Combination Tests		
Interfaces	Wi-Fi, USB 3.0/2.0 Host, USB Type-C, Grounding, HDMI, Trigger out		
Display	Industrial 10.1" TFT-LCD (1280*800), 11*10 divisions		
Dimension / Net Weight	265*192*50mm / 1.9kg (with battery)		
Battery / Duration	7.4V, 7500mAh / 5H	7.4V, 7500mAh / 2H	

Features

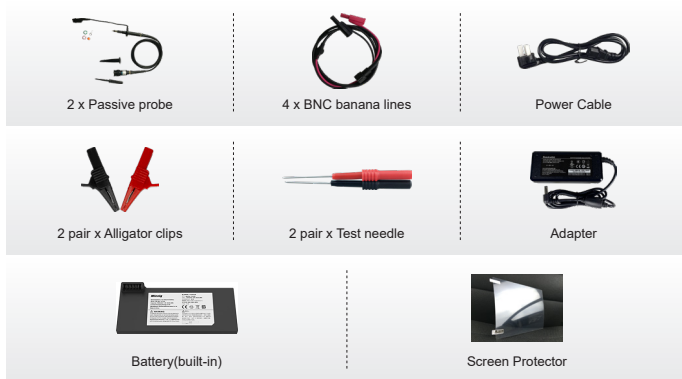
- Portable tablet design with all-in-one functions
- Comprehensive auto diagnostic presets
- Powerful signal capture and analysis capabilities
- Support PC & Smartphone remote control
- HDMI function for training & demonstration
- Life-long free software online upgrade



References



Standard Kit



Master Kit

